



GM130 Polyclonal Antibody

Catalog No	YP-Ab-16300
Isotype	IgG
Reactivity	Human; Mouse; Rat
Applications	WB;IHC;IF;ELISA
Gene Name	GOLGA2
Protein Name	GM130
Immunogen	Synthesized peptide derived from human GM130
Specificity	This antibody detects endogenous levels of human GM130
Formulation	Liquid in PBS containing 50% glycerol, 0.5% BSA and 0.02% sodium azide.
Source	Polyclonal, Rabbit,IgG
Purification	The antibody was affinity-purified from mouse ascites by affinity-chromatography using specific immunogen.
Dilution	WB: 1/500 - 1/2000. ELISA: 1/10000.. IF 1:50-200
Concentration	1 mg/ml
Purity	≥90%
Storage Stability	-20°C/1 year
Synonyms	Golgin subfamily A member 2 (130 kDa cis-Golgi matrix protein;GM130;GM130 autoantigen;Golgin-95)
Observed Band	112-130kD
Cell Pathway	Golgi apparatus, cis-Golgi network membrane ; Peripheral membrane protein ; Cytoplasmic side . Endoplasmic reticulum-Golgi intermediate compartment membrane ; Peripheral membrane protein ; Cytoplasmic side . Cytoplasm, cytoskeleton, spindle pole . Associates with the mitotic spindle during mitosis (PubMed:26165940). .
Tissue Specificity	Brain,Cervix,Colon adenocarcinoma,Epithelium,Heart,Hepatocyte,Liver,Placenta,Thymus,
Function	domain:Extended rod-like protein with coiled-coil domains.,function:Golgi auto-antigen; probably involved in maintaining cis-Golgi structure.,sequence caution:Sequence differs from that shown after position 814 due to an internal deletion.,similarity:Belongs to the GOLGA2 family.,subunit:Part of a larger oligomeric complex. Interacts with p115 (By similarity). Interacts with RAB1B that has been activated by GTP-binding. Interacts with GORASP1/GRASP65 and ZFPL1.,
Background	The Golgi apparatus, which participates in glycosylation and transport of proteins and lipids in the secretory pathway, consists of a series of stacked cisternae (flattened membrane sacs). Interactions between the Golgi and microtubules are thought to be important for the reorganization of the Golgi after it fragments during



mitosis. This gene encodes one of the golgins, a family of proteins localized to the Golgi. This encoded protein has been postulated to play roles in the stacking of Golgi cisternae and in vesicular transport. Several alternatively spliced transcript variants of this gene have been described, but the full-length nature of these variants has not been determined. [provided by RefSeq, Feb 2010],

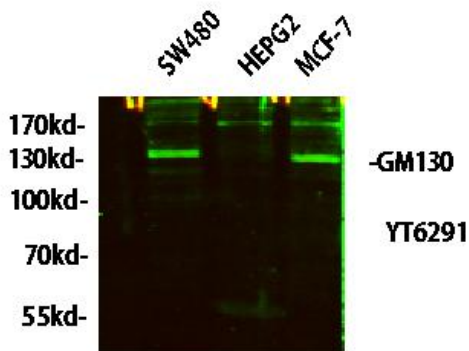
matters needing attention

Avoid repeated freezing and thawing!

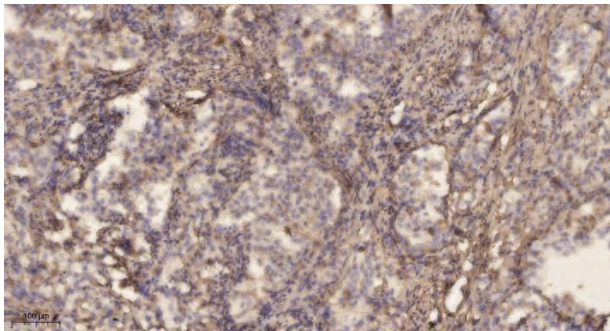
Usage suggestions

This product can be used in immunological reaction related experiments. For more information, please consult technical personnel.

Products Images



Western blot analysis of lysates from HT-29, NIH/3T3, and HepG2 cells, primary antibody was diluted at 1:1000, 4° overnight, secondary antibody(cat: RS23920)was diluted at 1:10000, 37° 1hour.



Immunohistochemical analysis of paraffin-embedded human lung cancer. 1, Antibody was diluted at 1:200(4° overnight). 2, Tris-EDTA,pH9.0 was used for antigen retrieval. 3,Secondary antibody was diluted at 1:200(room temperature, 45min).